

化学测试报告

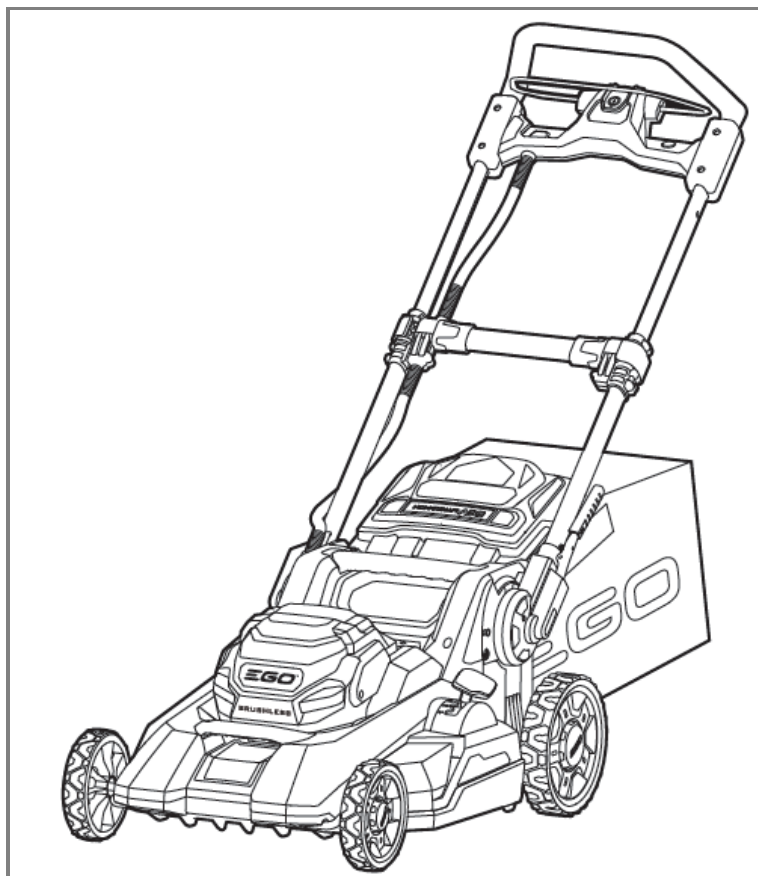
Chemical Testing Report

CHTC-TCR-015

报告号 Report No.	C1700090538—Part 2		
申请者 Applicant 地址 Address	Guidong li 南京市江宁经济技术开发区将军大道529号 No.529 Jiang-Jun Road, Jiangning Economic & Technical Development Zone		
生产厂家 Factory 地址 Address	Nanjing Chervon Industry Co.,Ltd 南京市江宁经济技术开发区将军大道529号 No.529 Jiang-Jun Road, Jiangning Economic & Technical Development Zone		
样品名称 Product 型号 Model 额定参数 Rating	Mower 4907/LM2130 4907.1/LM2130SP 56V		
申请号 Receipt No.	1700090538		
接收日期 Date of Receipt	2019-7-29		
测试标准 Test Standards	CPSC-CH-C1001-09.3 / Reference to California Proposition 65 List of Chemicals & As Client's requirement		
补充说明 Additional Information	Phthalate test(Nine)+ Lead/Cadmium test		
测试结果 Testing result	PASS		
测试人 Tested by	张玉玲	核查人 Reviewed by	王成学
批准人 Issued by	王成学		报告专用章 Stamp
日期 Date	2019-7-31	日期: Date	2019-7-31
日期 Date	2019-7-31	日期: Date	2019-7-31
Possible test case verdicts:	<ul style="list-style-type: none"> - 测试合格 test object does meet the requirement - 测试失败 test object does not meet the requirement - 测试不涉及 test case dose not apply to the test object 		<ul style="list-style-type: none"> : PASS : FAIL : N/A
备注 Remark	<p>(1)本报告提供的测试结果仅对本次被测试样品有效。 The test results apply only to the particular samples tested and the tests carried out.</p> <p>(2)未经泉峰测试中心书面授权，不得部分复制本报告。 The report shall not be copied except in full without the written permit of Chervon Testing Center.</p>		

PRODUCT PHOTOGRAPH:

i. LM2130



ii. LM2130SP



SUMMARY OF TEST RESULTS

TEST REQUESTED	CONCLUSION
Phthalates Content - Reference to California Proposition 65 List of Chemicals & As Client's requirement	PASS
Total Lead & Cadmium Content - Reference to California Proposition 65 List of Chemicals & As Client's requirement	PASS

I Phthalates Content - Reference to California Proposition 65 List of Chemicals & As Client's requirement

Result Summary:

No.	Sample No.	Sample Name	Material	Color	Material Code	Conclusion
1	C1700090538-010	67 左自走按钮 Button	--	绿色 Green	3129663001	PASS
2	C1700090538-011	68 右自走按钮 Button	--	绿色 Green	3129664001	PASS
3	C1700091032-006	91-1 把手组 (硬胶) Handle Cover ASSY	PA6-GF30	黑色 Black	3900241001	PASS
4	C1700091032-007	91-2 把手组 (软胶) Handle Cover ASSY	TPE	黑色 Black	3900241001	PASS
5	C1700090480-003	13-1 轮胎皮 Wheel Assembly	PP+PVC	黑色 Black	2824429001	PASS
6	C1700090480-004	13-2 塑料轮 Wheel Assembly	--	黑色 Black	2824429001	PASS
7	C1700090480-005	13-3 绿色装饰环 Wheel Assembly	--	绿色 Green	2824429001	PASS
8	C1700090484-010	5-1 绿色胶皮 Grass Catcher	--	绿色 Green	3800109002	PASS
9	C1700090484-011	5-2 白色胶皮 Grass Catcher	--	白色 White	3800109002	PASS
10	C1700090484-012	5-3 黑色布料 Grass Catcher	--	黑色 Black	3800109002	PASS
11	C1700090484-013	5-4 标识带 Grass Catcher	--	黑 Black+ 白 White	3800109002	PASS
12	C1700090484-014	5-5 带子 (黑) Grass Catcher	--	黑色 Black	3800109002	PASS
13	C1700090484-015	5-6 黑色塑料底片 Grass Catcher	--	黑色 Black	3800109002	PASS
14	C1700090484-016	5-7 黑色塑料底垫 Grass Catcher	--	黑色 Black	3800109002	PASS
15	C1700090493-033	37-1 黑色塑胶皮 Wheel Assembly	--	黑色 Black	2825267001	PASS
16	C1700090493-034	37-2 白色塑料 Wheel Assembly	--	白色 White	2825267001	PASS
17	C1700090493-035	37-3 塑料轮子-黑 Wheel Assembly	--	黑色 Black	2825267001	PASS

18	C1700090493-036	37-4 塑料轮子-绿 Wheel Assembly	--	绿色 Green	2825267001	PASS
19	C1700090770-001	80-1 压草板-硬胶 Trail Shield	--	黑色 Black	3126391001	PASS
20	C1700090770-002	80-2 压草板-软胶 Trail Shield	PVC	黑色 Black	3126391001	PASS
21	C1700090770-004	82 橡胶垫 Rubber Pad	NBR	黑色 Black	3128083001	PASS

Test Method:

Reference to the method of
CPSC-CH-C1001-09.3
Standard Operating Procedure for Determination of Phthalates

Instrument	Manufactory	Model/Type	Calibration
GC-MS	Agilent	7890A-5977B	Cal. Date: 2017-8-23 Due. Date: 2019-8-22

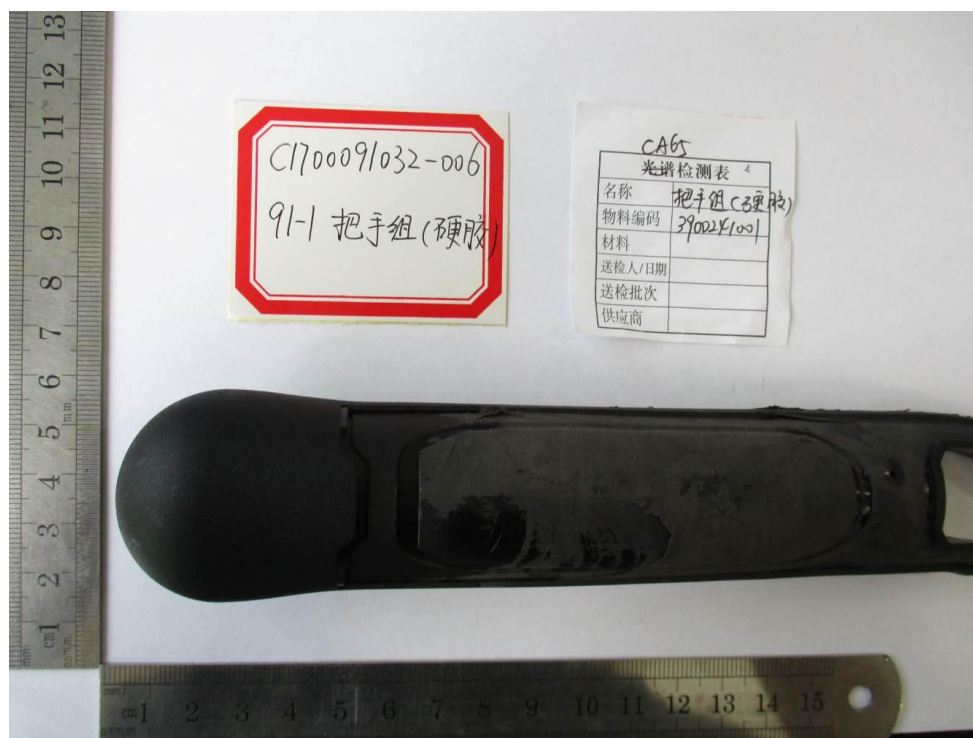
Result and Photograph Documentation:



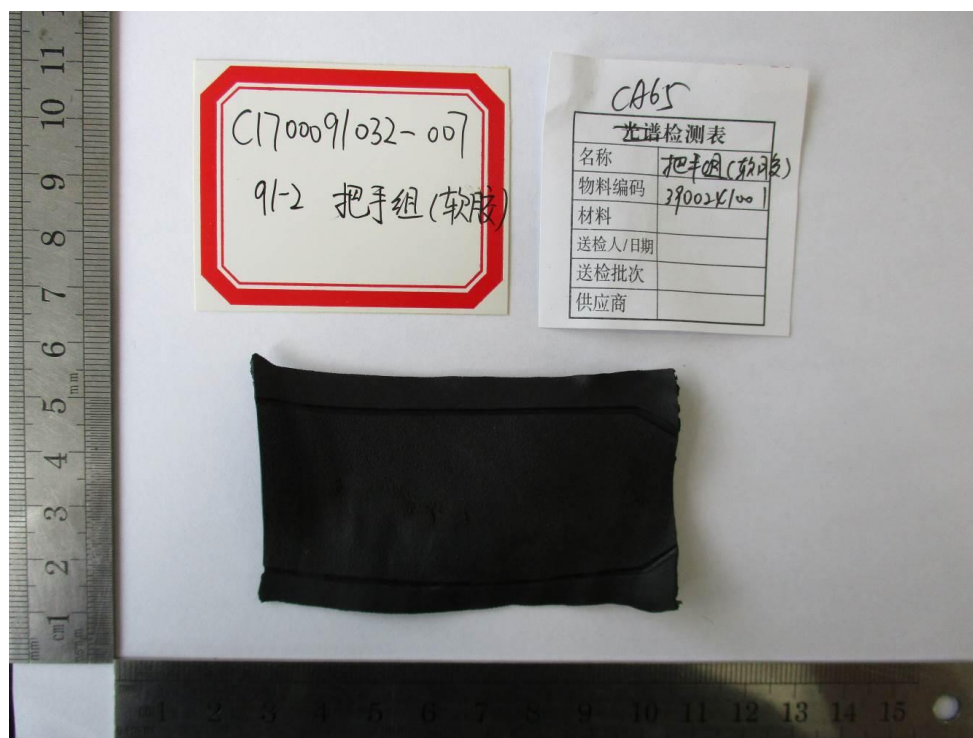
Tested item:	C170090538-010 67 左自走按钮 Button			
Parameter	CAS No	Unit	MDL	Result
Diisobutyl phthalate(DIBP)	84-69-5	%	0.005	< MDL
Dibutyl phthalate (DBP)	84-74-2	%	0.005	< MDL
Bis (2-methoxyethyl) phthalate (DMEP)	117-82-8	%	0.005	< MDL
Butyl benzyl phthalate (BBP)	85-68-7	%	0.005	< MDL
Di-2-ethylhexyl phthalate (DEHP)	117-81-7	%	0.005	< MDL
Di-cyclohexyl phthalate (DCHP)	84-61-7	%	0.01	< MDL
Di- <i>n</i> -octyl phthalate (DNOP)	117-84-0	%	0.005	< MDL
Di- <i>iso</i> -nonyl phthalate (DINP)	28553-12-0	%	0.01	< MDL
Di- <i>iso</i> -decyl phthalate (DIDP)	26761-40-0	%	0.01	< MDL



Tested item:	C1700090538-011 68 右自走按钮 Button			
Parameter	CAS No	Unit	MDL	Result
Diisobutyl phthalate(DIBP)	84-69-5	%	0.005	< MDL
Dibutyl phthalate (DBP)	84-74-2	%	0.005	< MDL
Bis (2-methoxyethyl) phthalate (DMEP)	117-82-8	%	0.005	< MDL
Butyl benzyl phthalate (BBP)	85-68-7	%	0.005	< MDL
Di-2-ethylhexyl phthalate (DEHP)	117-81-7	%	0.005	< MDL
Di-cyclohexyl phthalate (DCHP)	84-61-7	%	0.01	< MDL
Di-n-octyl phthalate (DNOP)	117-84-0	%	0.005	< MDL
Di-iso-nonyl phthalate (DINP)	28553-12-0	%	0.01	< MDL
Di-iso-decyl phthalate (DIDP)	26761-40-0	%	0.01	< MDL



Tested item:	C1700091032-006 91-1 把手组(硬胶)Handle Cover ASSY			
Parameter	CAS No	Unit	MDL	Result
Diisobutyl phthalate(DIBP)	84-69-5	%	0.005	< MDL
Dibutyl phthalate (DBP)	84-74-2	%	0.005	< MDL
Bis (2-methoxyethyl) phthalate (DMEP)	117-82-8	%	0.005	< MDL
Butyl benzyl phthalate (BBP)	85-68-7	%	0.005	< MDL
Di-2-ethylhexyl phthalate (DEHP)	117-81-7	%	0.005	< MDL
Di-cyclohexyl phthalate (DCHP)	84-61-7	%	0.01	< MDL
Di-n-octyl phthalate (DNOP)	117-84-0	%	0.005	< MDL
Di-iso-nonyl phthalate (DINP)	28553-12-0	%	0.01	< MDL
Di-iso-decyl phthalate (DIDP)	26761-40-0	%	0.01	< MDL



Tested item:	C1700091032-007 91-2 把手组(软胶)Handle Cover ASSY			
Parameter	CAS No	Unit	MDL	Result
Diisobutyl phthalate(DIBP)	84-69-5	%	0.005	< MDL
Dibutyl phthalate (DBP)	84-74-2	%	0.005	< MDL
Bis (2-methoxyethyl) phthalate (DMEP)	117-82-8	%	0.005	< MDL
Butyl benzyl phthalate (BBP)	85-68-7	%	0.005	< MDL
Di-2-ethylhexyl phthalate (DEHP)	117-81-7	%	0.005	< MDL
Di-cyclohexyl phthalate (DCHP)	84-61-7	%	0.01	< MDL
Di-n-octyl phthalate (DNOP)	117-84-0	%	0.005	< MDL
Di-iso-nonyl phthalate (DINP)	28553-12-0	%	0.01	< MDL
Di-iso-decyl phthalate (DIDP)	26761-40-0	%	0.01	< MDL



Tested item:	C1700090480-003 13-1 轮胎皮 Wheel Assembly			
Parameter	CAS No	Unit	MDL	Result
Diisobutyl phthalate(DIBP)	84-69-5	%	0.005	< MDL
Dibutyl phthalate (DBP)	84-74-2	%	0.005	< MDL
Bis (2-methoxyethyl) phthalate (DMEP)	117-82-8	%	0.005	< MDL
Butyl benzyl phthalate (BBP)	85-68-7	%	0.005	< MDL
Di-2-ethylhexyl phthalate (DEHP)	117-81-7	%	0.005	< MDL
Di-cyclohexyl phthalate (DCHP)	84-61-7	%	0.01	< MDL
Di-n-octyl phthalate (DNOP)	117-84-0	%	0.005	< MDL
Di-iso-nonyl phthalate (DINP)	28553-12-0	%	0.01	< MDL
Di-iso-decyl phthalate (DIDP)	26761-40-0	%	0.01	< MDL



Tested item:	C1700090480-004 13-2 塑料轮 Wheel Assembly			
Parameter	CAS No	Unit	MDL	Result
Diisobutyl phthalate(DIBP)	84-69-5	%	0.005	< MDL
Dibutyl phthalate (DBP)	84-74-2	%	0.005	< MDL
Bis (2-methoxyethyl) phthalate (DMEP)	117-82-8	%	0.005	< MDL
Butyl benzyl phthalate (BBP)	85-68-7	%	0.005	< MDL
Di-2-ethylhexyl phthalate (DEHP)	117-81-7	%	0.005	< MDL
Di-cyclohexyl phthalate (DCHP)	84-61-7	%	0.01	< MDL
Di-n-octyl phthalate (DNOP)	117-84-0	%	0.005	< MDL
Di-iso-nonyl phthalate (DINP)	28553-12-0	%	0.01	< MDL
Di-iso-decyl phthalate (DIDP)	26761-40-0	%	0.01	< MDL



Tested item:	C1700090480-005 13-3 绿色装饰环 Wheel Assembly			
Parameter	CAS No	Unit	MDL	Result
Diisobutyl phthalate(DIBP)	84-69-5	%	0.005	< MDL
Dibutyl phthalate (DBP)	84-74-2	%	0.005	< MDL
Bis (2-methoxyethyl) phthalate (DMEP)	117-82-8	%	0.005	< MDL
Butyl benzyl phthalate (BBP)	85-68-7	%	0.005	< MDL
Di-2-ethylhexyl phthalate (DEHP)	117-81-7	%	0.005	< MDL
Di-cyclohexyl phthalate (DCHP)	84-61-7	%	0.01	< MDL
Di-n-octyl phthalate (DNOP)	117-84-0	%	0.005	< MDL
Di-iso-nonyl phthalate (DINP)	28553-12-0	%	0.01	< MDL
Di-iso-decyl phthalate (DIDP)	26761-40-0	%	0.01	< MDL



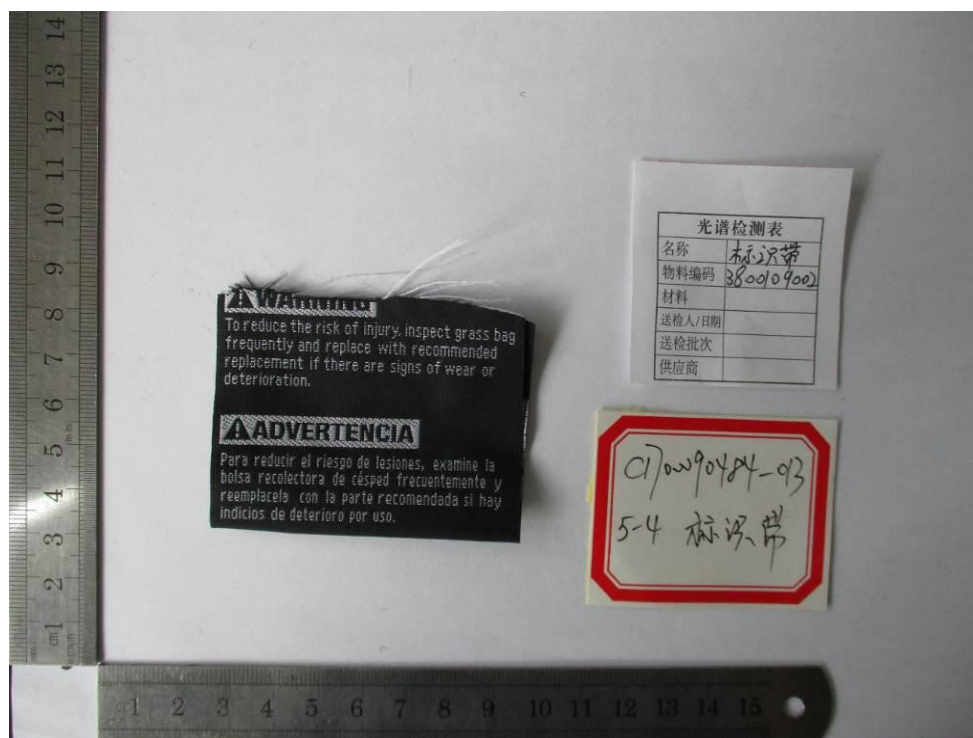
Tested item:	C1700090484-010 5-1 绿色胶皮 Grass Catcher			
Parameter	CAS No	Unit	MDL	Result
Diisobutyl phthalate(DIBP)	84-69-5	%	0.005	< MDL
Dibutyl phthalate (DBP)	84-74-2	%	0.005	0.061
Bis (2-methoxyethyl) phthalate (DMEP)	117-82-8	%	0.005	< MDL
Butyl benzyl phthalate (BBP)	85-68-7	%	0.005	< MDL
Di-2-ethylhexyl phthalate (DEHP)	117-81-7	%	0.005	< MDL
Di-cyclohexyl phthalate (DCHP)	84-61-7	%	0.01	< MDL
Di-n-octyl phthalate (DNOP)	117-84-0	%	0.005	< MDL
Di-iso-nonyl phthalate (DINP)	28553-12-0	%	0.01	< MDL
Di-iso-decyl phthalate (DIDP)	26761-40-0	%	0.01	< MDL



Tested item:	C1700090484-011 5-2 白色胶皮 Grass Catcher			
Parameter	CAS No	Unit	MDL	Result
Diisobutyl phthalate(DIBP)	84-69-5	%	0.005	< MDL
Dibutyl phthalate (DBP)	84-74-2	%	0.005	0.034
Bis (2-methoxyethyl) phthalate (DMEP)	117-82-8	%	0.005	< MDL
Butyl benzyl phthalate (BBP)	85-68-7	%	0.005	< MDL
Di-2-ethylhexyl phthalate (DEHP)	117-81-7	%	0.005	< MDL
Di-cyclohexyl phthalate (DCHP)	84-61-7	%	0.01	< MDL
Di-n-octyl phthalate (DNOP)	117-84-0	%	0.005	< MDL
Di-iso-nonyl phthalate (DINP)	28553-12-0	%	0.01	< MDL
Di-iso-decyl phthalate (DIDP)	26761-40-0	%	0.01	< MDL



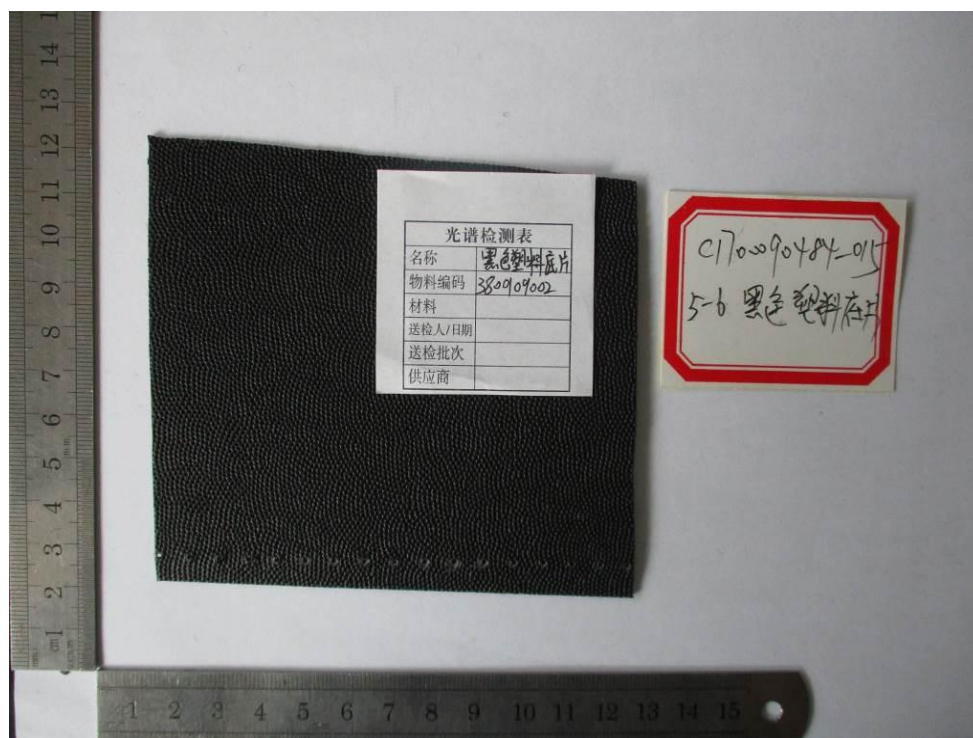
Tested item:	C1700090484-012 5-3 黑色布料 Grass Catcher			
Parameter	CAS No	Unit	MDL	Result
Diisobutyl phthalate(DIBP)	84-69-5	%	0.005	< MDL
Dibutyl phthalate (DBP)	84-74-2	%	0.005	< MDL
Bis (2-methoxyethyl) phthalate (DMEP)	117-82-8	%	0.005	< MDL
Butyl benzyl phthalate (BBP)	85-68-7	%	0.005	< MDL
Di-2-ethylhexyl phthalate (DEHP)	117-81-7	%	0.005	< MDL
Di-cyclohexyl phthalate (DCHP)	84-61-7	%	0.01	< MDL
Di-n-octyl phthalate (DNOP)	117-84-0	%	0.005	< MDL
Di-iso-nonyl phthalate (DINP)	28553-12-0	%	0.01	< MDL
Di-iso-decyl phthalate (DIDP)	26761-40-0	%	0.01	< MDL



Tested item:	C1700090484-013 5-4 标识带 Grass Catcher			
Parameter	CAS No	Unit	MDL	Result
Diisobutyl phthalate(DIBP)	84-69-5	%	0.005	< MDL
Dibutyl phthalate (DBP)	84-74-2	%	0.005	< MDL
Bis (2-methoxyethyl) phthalate (DMEP)	117-82-8	%	0.005	< MDL
Butyl benzyl phthalate (BBP)	85-68-7	%	0.005	< MDL
Di-2-ethylhexyl phthalate (DEHP)	117-81-7	%	0.005	< MDL
Di-cyclohexyl phthalate (DCHP)	84-61-7	%	0.01	< MDL
Di-n-octyl phthalate (DNOP)	117-84-0	%	0.005	< MDL
Di-iso-nonyl phthalate (DINP)	28553-12-0	%	0.01	< MDL
Di-iso-decyl phthalate (DIDP)	26761-40-0	%	0.01	< MDL



Tested item:	C1700090484-014 5-5 带子 (黑) Grass Catcher			
Parameter	CAS No	Unit	MDL	Result
Diisobutyl phthalate(DIBP)	84-69-5	%	0.005	< MDL
Dibutyl phthalate (DBP)	84-74-2	%	0.005	0.005
Bis (2-methoxyethyl) phthalate (DMEP)	117-82-8	%	0.005	< MDL
Butyl benzyl phthalate (BBP)	85-68-7	%	0.005	< MDL
Di-2-ethylhexyl phthalate (DEHP)	117-81-7	%	0.005	< MDL
Di-cyclohexyl phthalate (DCHP)	84-61-7	%	0.01	< MDL
Di-n-octyl phthalate (DNOP)	117-84-0	%	0.005	< MDL
Di-iso-nonyl phthalate (DINP)	28553-12-0	%	0.01	< MDL
Di-iso-decyl phthalate (DIDP)	26761-40-0	%	0.01	< MDL



Tested item:	C1700090484-015 5-6 黑色塑料底片 Grass Catcher			
Parameter	CAS No	Unit	MDL	Result
Diisobutyl phthalate(DIBP)	84-69-5	%	0.005	< MDL
Dibutyl phthalate (DBP)	84-74-2	%	0.005	0.017
Bis (2-methoxyethyl) phthalate (DMEP)	117-82-8	%	0.005	< MDL
Butyl benzyl phthalate (BBP)	85-68-7	%	0.005	< MDL
Di-2-ethylhexyl phthalate (DEHP)	117-81-7	%	0.005	0.008
Di-cyclohexyl phthalate (DCHP)	84-61-7	%	0.01	< MDL
Di-n-octyl phthalate (DNOP)	117-84-0	%	0.005	< MDL
Di-iso-nonyl phthalate (DINP)	28553-12-0	%	0.01	< MDL
Di-iso-decyl phthalate (DIDP)	26761-40-0	%	0.01	< MDL



Tested item:	C1700090484-016 5-7 黑色塑料底垫 Grass Catcher			
Parameter	CAS No	Unit	MDL	Result
Diisobutyl phthalate(DIBP)	84-69-5	%	0.005	< MDL
Dibutyl phthalate (DBP)	84-74-2	%	0.005	< MDL
Bis (2-methoxyethyl) phthalate (DMEP)	117-82-8	%	0.005	< MDL
Butyl benzyl phthalate (BBP)	85-68-7	%	0.005	< MDL
Di-2-ethylhexyl phthalate (DEHP)	117-81-7	%	0.005	0.016
Di-cyclohexyl phthalate (DCHP)	84-61-7	%	0.01	< MDL
Di-n-octyl phthalate (DNOP)	117-84-0	%	0.005	< MDL
Di-iso-nonyl phthalate (DINP)	28553-12-0	%	0.01	< MDL
Di-iso-decyl phthalate (DIDP)	26761-40-0	%	0.01	< MDL



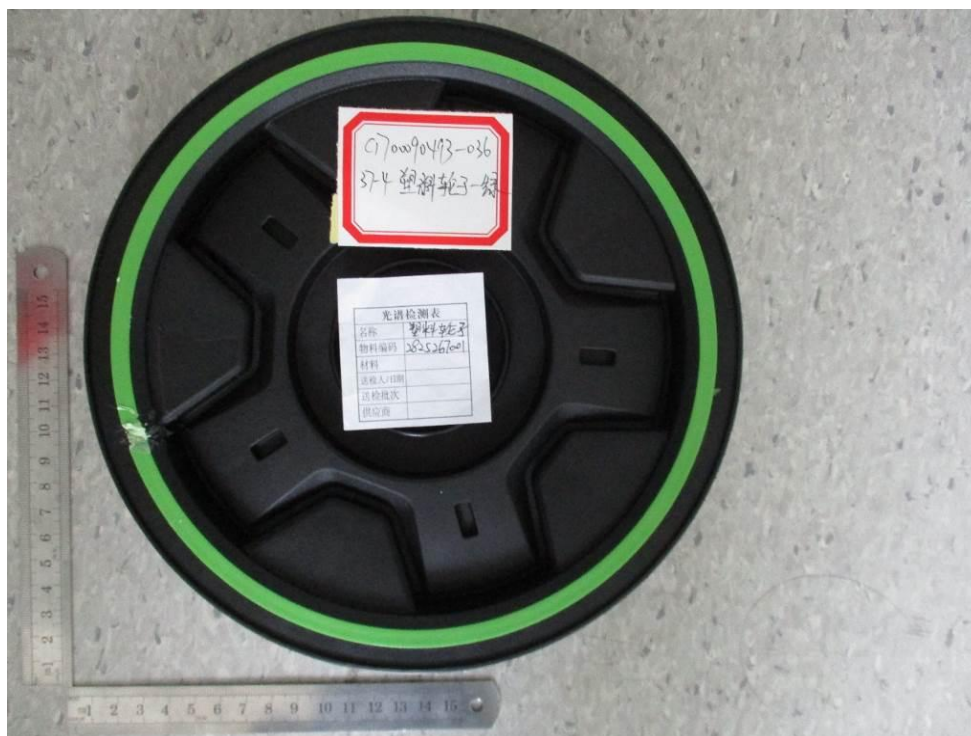
Tested item:	C1700090493-033 37-1 黑色塑胶皮 Wheel Assembly			
Parameter	CAS No	Unit	MDL	Result
Diisobutyl phthalate(DIBP)	84-69-5	%	0.005	< MDL
Dibutyl phthalate (DBP)	84-74-2	%	0.005	< MDL
Bis (2-methoxyethyl) phthalate (DMEP)	117-82-8	%	0.005	< MDL
Butyl benzyl phthalate (BBP)	85-68-7	%	0.005	< MDL
Di-2-ethylhexyl phthalate (DEHP)	117-81-7	%	0.005	< MDL
Di-cyclohexyl phthalate (DCHP)	84-61-7	%	0.01	< MDL
Di-n-octyl phthalate (DNOP)	117-84-0	%	0.005	< MDL
Di-iso-nonyl phthalate (DINP)	28553-12-0	%	0.01	< MDL
Di-iso-decyl phthalate (DIDP)	26761-40-0	%	0.01	< MDL



Tested item:	C1700090493-034 37-2 白色塑料 Wheel Assembly			
Parameter	CAS No	Unit	MDL	Result
Diisobutyl phthalate(DIBP)	84-69-5	%	0.005	< MDL
Dibutyl phthalate (DBP)	84-74-2	%	0.005	< MDL
Bis (2-methoxyethyl) phthalate (DMEP)	117-82-8	%	0.005	< MDL
Butyl benzyl phthalate (BBP)	85-68-7	%	0.005	< MDL
Di-2-ethylhexyl phthalate (DEHP)	117-81-7	%	0.005	< MDL
Di-cyclohexyl phthalate (DCHP)	84-61-7	%	0.01	< MDL
Di-n-octyl phthalate (DNOP)	117-84-0	%	0.005	< MDL
Di-iso-nonyl phthalate (DINP)	28553-12-0	%	0.01	< MDL
Di-iso-decyl phthalate (DIDP)	26761-40-0	%	0.01	< MDL



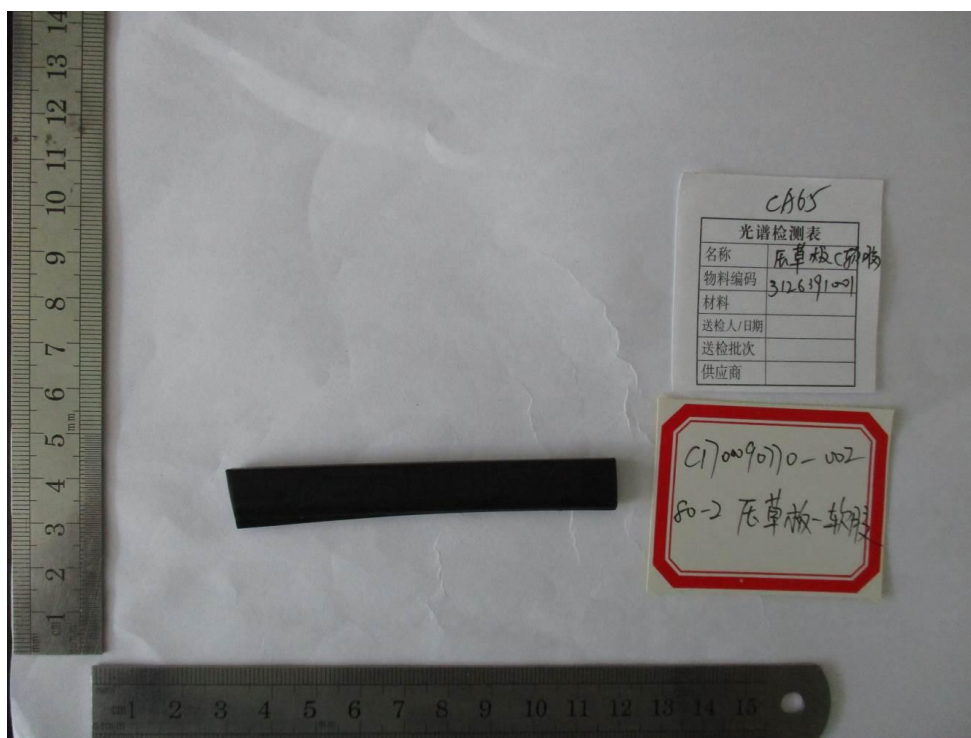
Tested item:	C1700090493-035 37-3 塑料轮子-黑 Wheel Assembly			
Parameter	CAS No	Unit	MDL	Result
Diisobutyl phthalate(DIBP)	84-69-5	%	0.005	< MDL
Dibutyl phthalate (DBP)	84-74-2	%	0.005	< MDL
Bis (2-methoxyethyl) phthalate (DMEP)	117-82-8	%	0.005	< MDL
Butyl benzyl phthalate (BBP)	85-68-7	%	0.005	< MDL
Di-2-ethylhexyl phthalate (DEHP)	117-81-7	%	0.005	< MDL
Di-cyclohexyl phthalate (DCHP)	84-61-7	%	0.01	< MDL
Di-n-octyl phthalate (DNOP)	117-84-0	%	0.005	< MDL
Di-iso-nonyl phthalate (DINP)	28553-12-0	%	0.01	< MDL
Di-iso-decyl phthalate (DIDP)	26761-40-0	%	0.01	< MDL



Tested item:	C1700090493-036 37-4 塑料轮子-绿 Wheel Assembly			
Parameter	CAS No	Unit	MDL	Result
Diisobutyl phthalate(DIBP)	84-69-5	%	0.005	< MDL
Dibutyl phthalate (DBP)	84-74-2	%	0.005	< MDL
Bis (2-methoxyethyl) phthalate (DMEP)	117-82-8	%	0.005	< MDL
Butyl benzyl phthalate (BBP)	85-68-7	%	0.005	< MDL
Di-2-ethylhexyl phthalate (DEHP)	117-81-7	%	0.005	< MDL
Di-cyclohexyl phthalate (DCHP)	84-61-7	%	0.01	< MDL
Di-n-octyl phthalate (DNOP)	117-84-0	%	0.005	< MDL
Di-iso-nonyl phthalate (DINP)	28553-12-0	%	0.01	< MDL
Di-iso-decyl phthalate (DIDP)	26761-40-0	%	0.01	< MDL



Tested item:	C1700090770-001 80-1 压草板-硬胶 Trail Shield			
Parameter	CAS No	Unit	MDL	Result
Diisobutyl phthalate(DIBP)	84-69-5	%	0.005	< MDL
Dibutyl phthalate (DBP)	84-74-2	%	0.005	< MDL
Bis (2-methoxyethyl) phthalate (DMEP)	117-82-8	%	0.005	< MDL
Butyl benzyl phthalate (BBP)	85-68-7	%	0.005	< MDL
Di-2-ethylhexyl phthalate (DEHP)	117-81-7	%	0.005	0.021
Di-cyclohexyl phthalate (DCHP)	84-61-7	%	0.01	< MDL
Di-n-octyl phthalate (DNOP)	117-84-0	%	0.005	< MDL
Di-iso-nonyl phthalate (DINP)	28553-12-0	%	0.01	< MDL
Di-iso-decyl phthalate (DIDP)	26761-40-0	%	0.01	< MDL



Tested item:	C1700090770-002 80-2 压草板-软胶 Trail Shield			
Parameter	CAS No	Unit	MDL	Result
Diisobutyl phthalate(DIBP)	84-69-5	%	0.005	< MDL
Dibutyl phthalate (DBP)	84-74-2	%	0.005	< MDL
Bis (2-methoxyethyl) phthalate (DMEP)	117-82-8	%	0.005	< MDL
Butyl benzyl phthalate (BBP)	85-68-7	%	0.005	< MDL
Di-2-ethylhexyl phthalate (DEHP)	117-81-7	%	0.005	< MDL
Di-cyclohexyl phthalate (DCHP)	84-61-7	%	0.01	< MDL
Di-n-octyl phthalate (DNOP)	117-84-0	%	0.005	< MDL
Di-iso-nonyl phthalate (DINP)	28553-12-0	%	0.01	< MDL
Di-iso-decyl phthalate (DIDP)	26761-40-0	%	0.01	< MDL



Tested item:	C1700090770-004 82 橡胶垫 Rubber Pad			
Parameter	CAS No	Unit	MDL	Result
Diisobutyl phthalate(DIBP)	84-69-5	%	0.005	< MDL
Dibutyl phthalate (DBP)	84-74-2	%	0.005	< MDL
Bis (2-methoxyethyl) phthalate (DMEP)	117-82-8	%	0.005	< MDL
Butyl benzyl phthalate (BBP)	85-68-7	%	0.005	< MDL
Di-2-ethylhexyl phthalate (DEHP)	117-81-7	%	0.005	< MDL
Di-cyclohexyl phthalate (DCHP)	84-61-7	%	0.01	< MDL
Di-n-octyl phthalate (DNOP)	117-84-0	%	0.005	< MDL
Di-iso-nonyl phthalate (DINP)	28553-12-0	%	0.01	< MDL
Di-iso-decyl phthalate (DIDP)	26761-40-0	%	0.01	< MDL

MDL= Method Detection Limit

Note:

The sample conclusion is according to CA prop 65 & client request.

Parameters	Limit [% by Weight]
DIBP, DBP, DMEP, BBP, DEHP, DNOP, DINP, DIDP each	<0.1% (w/w)

II Total Lead & Cadmium Content - Reference to California Proposition 65

List of Chemicals & As Client's requirement

Product Name	Material Code	Test Data (mg/kg(ppm))								Tested Result
		Cd	3sigma	Pb	3sigma	Cr	3sigma	Hg	3sigma	
65 扳机 (漆层) Control Handle Set	2825826001	2.6	9.5	66.5	21.7	0.0	24.3	1.1	3.3	PASS
67 左自走按钮 Button	3129663001	0.1	20.0	0.0	11.3	0.3	41.3	2.1	7.5	PASS
68 右自走按钮 Button	3129664001	1.6	23.8	0.0	11.6	0.0	51.9	2.1	7.8	PASS
91-1 把手组 (硬胶) Handle Cover ASSY	3900241001	1.6	19.6	6.5	7.1	1.0	46.8	0.1	7.1	PASS
91-2 把手组 (软胶) Handle Cover ASSY	3900241001	0.1	18.0	0.2	7.2	0.4	32.3	2.6	5.9	PASS
13-1 轮胎皮 Wheel Assembly	2824429001	0.1	16.8	3.1	11.8	0.0	126.5	1.6	11.7	PASS
13-2 塑料轮 Wheel Assembly	2824429001	3.8	37.8	7.2	15.8	0.0	41.5	4.7	12.6	PASS
13-3 绿色装饰环 Wheel Assembly	2824429001	0.7	23.8	8.9	11.4	0.0	30.0	4.9	9.2	PASS
13-4 轴承架 Wheel Assembly	2824429001	11.3	30.6	195.5	84.2	Cr ⁶⁺ Negative		5.1	110.2	PASS
5-1 绿色胶皮 Grass Catcher	3800109002	3.7	18.9	0.1	7.1	0.0	35.0	1.9	6.3	PASS
5-2 白色胶皮 Grass Catcher	3800109002	0.0	23.2	1.8	8.2	0.3	34.2	1.8	9.0	PASS
5-3 黑色布料 Grass Catcher	3800109002	16.6	32.3	0.0	13.7	5.1	25.5	0.3	10.8	PASS
5-4 标识带 Grass Catcher	3800109002	8.1	42.7	0.0	20.3	0.3	24.7	1.7	15.3	PASS
5-5 带子 (黑) Grass Catcher	3800109002	3.3	32.9	0.0	15.1	0.0	24.3	7.4	11.7	PASS
5-6 黑色塑料底片 Grass Catcher	3800109002	6.5	17.3	8.0	7.1	0.4	27.4	1.6	5.8	PASS
5-7 黑色塑料底垫 Grass Catcher	3800109002	0.0	20.0	4.2	10.2	0.7	40.3	0.8	8.5	PASS
37-1 黑色塑胶皮 Wheel Assembly	2825267001	6.8	31.2	0.0	41.0	41.5	462.8	11.9	43.6	PASS

37-2 白色塑料 Wheel Assembly	2825267 001	10.4	18.1	2.0	7.2	0.0	33.2	2.4	6.1	PASS
37-3 塑料轮子- 黑 Wheel Assembly	2825267 001	8.1	9.9	0.9	6.8	0.0	33.5	0.9	6.8	PASS
37-4 塑料轮子- 绿 heel Assembly	2825267 001	10.7	26.5	5.8	9.2	0.5	57.7	3.1	8.3	PASS
80-1 压草板-硬 胶 Trail Shield	3126391 001	0.0	20.1	30.6	27.6	0.0	402.1	7.0	28.4	PASS
80-2 压草板-软 胶 Trail Shield	3126391 001	7.5	28.5	17.8	29.5	25.6	371.0	13.6	29.3	PASS
82 橡胶垫 Rubber Pad	3128083 001	0.0	19.4	1.7	6.7	0.3	24.6	0.2	7.3	PASS
66 扳机 (漆层) Control Handle	3705372 001	3.4	13.5	7.6	20.5	0.0	54.6	2.2	4.4	PASS

*****END OF REPORT*****